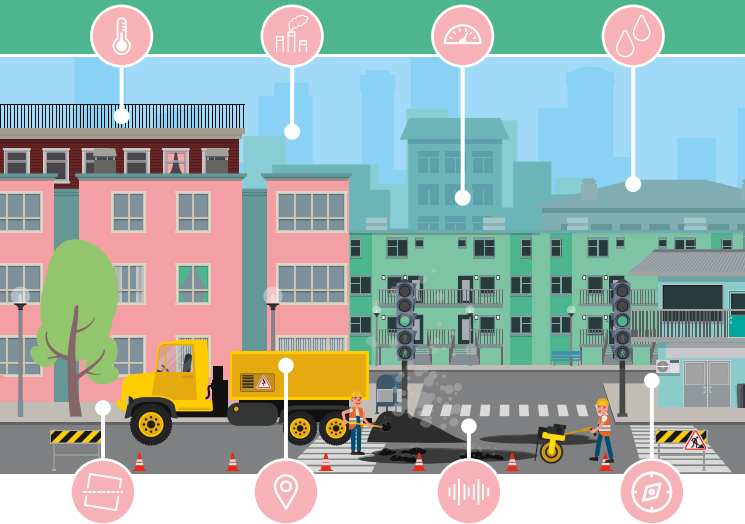


ENTO

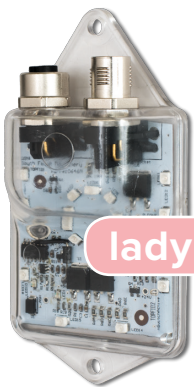
internet of things.



ENTO. a network of smart sensors deployed to capture in real-time the status of assets, to monitor the environment and ensure personal health & safety.



crikit.



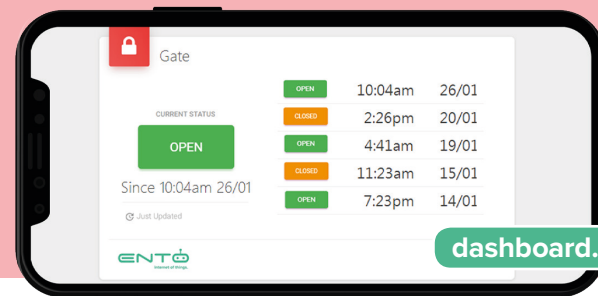
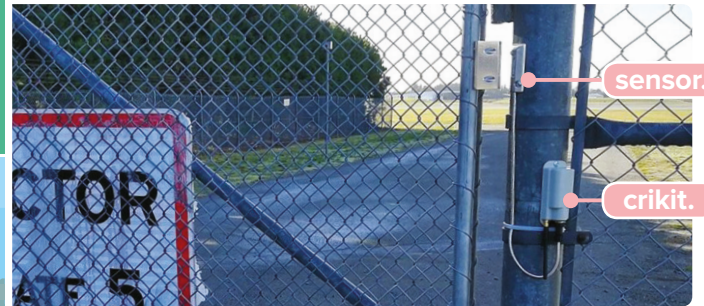
ladybird.

ento.co.nz



LoRaWAN

Criket. Gate & Door Sensor



dashboard.

Description. The Criket Gate & Door sensor is discretely installed to allow you to monitor the status of gates and doors. The dashboard lets you see current status, while custom alerts can be configured by the user to be notified by SMS or email if a gate is opened or closed within particular timeframes.

The Criket device heartbeats every 24 hours confirming network connectivity and battery status. The high-grade external aerial allows the unit to be installed indoors, and waterproof robust casing allows the device to be installed on outdoor gates.

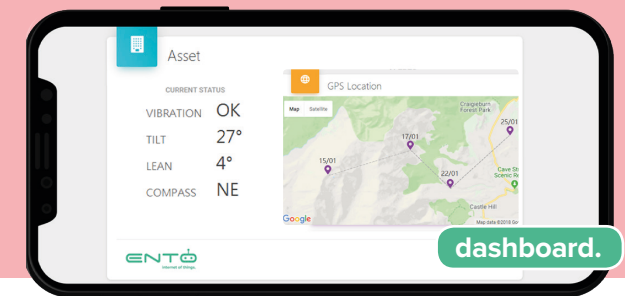
Possible applications.

- Monitoring gates & doors for security & access control purposes.

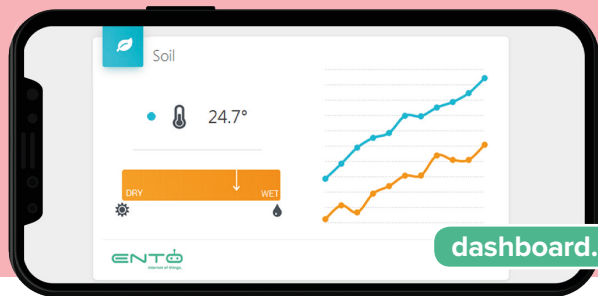
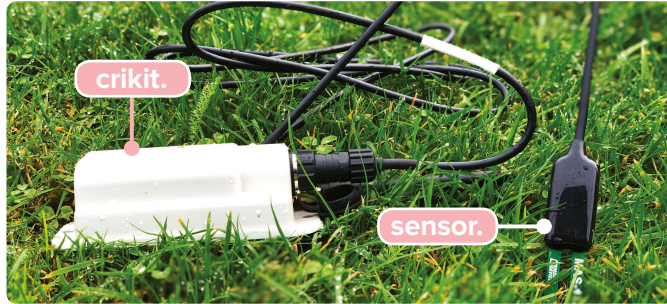
Features.

- 24 hourly heartbeat & battery status
- Custom alerts & notifications via SMS & email
- Tamper switch notification
- IP66 rated outdoor casing
- Discrete design & easy installation

Criket. Asset Monitoring



Criket. Soil Moisture Probe



dashboard.

Description. The Metergroup 10HS external soil moisture probe partnered with the Criket captures and reports current and historic soil moisture levels. LoRaWAN and Sigfox network characteristics allow both units to be fully buried underground but still allow excellent network connectivity.

Possible applications.

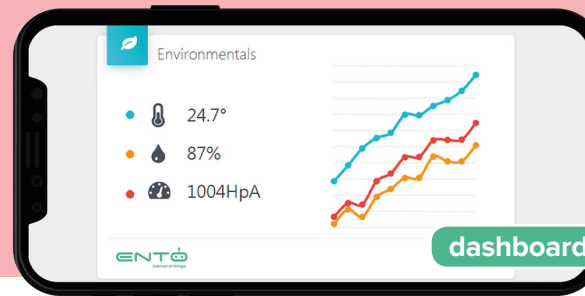
- 📶 Irrigation optimisation & control
- 📶 Monitoring soil moisture levels for residential garden management
- 📶 Monitoring soil moisture levels during construction

Features include.

- 📶 Dashboard showing current & historic soil moisture content
- 📶 Dashboard, SMS & email alerts if moisture drops below or exceeds pre-set levels
- 📶 24 hourly heartbeat & battery status
- 📶 Messaging interval from 1 hourly to 24 hourly
- 📶 IP66 rated outdoor casing
- 📶 Discrete design & easy installation



Criket. Environmental Sensor



dashboard.

Description. The Criket Environmental sensor measures temperature, humidity and air pressure in an external sensor. The sensor can be installed inside sealed locations (eg. containers and silos) whereas the communications unit can be installed in a location to maximise network connectivity.

Possible applications.

- 📶 Monitoring temperature & humidity in refrigerator containers & grain silos
- 📶 Monitoring air pressure for changes in weather

Features.

- 📶 24 hourly heartbeat & battery status
- 📶 Messaging interval from 1 hourly to 24 hourly
- 📶 Custom alerts & notifications via SMS and email
- 📶 IP66 rated outdoor casing
- 📶 Discrete design & easy installation

The team behind Ento.



📶 Alex.
Technical Lead

📶 Brett.
Sales Director

📶 Amanda.
Project Manager



📶 Jonathan.
Software Engineer

📶 Sean.
Technical Director

📶 Michael.
Marketing Manager

New Zealand's leading IoT provider, ENTOD was founded in 2017 by Brett O'Donnell and Sean Lewis in response to demand for low-cost, low-maintenance IoT products using cutting-edge technology on the Sigfox and LoRaWAN networks.

Brett has an extensive background delivering software solutions while Sean's background is in automation and control solutions. Based in Christchurch, our team have developed and implemented an extensive range of low-cost and scalable IoT solutions to some of New Zealand's largest organisations including NZTA, Spark, CityCare and Christchurch Airport.

Contact Us.

info@ento.co.nz | 021 348 358

ento.co.nz

